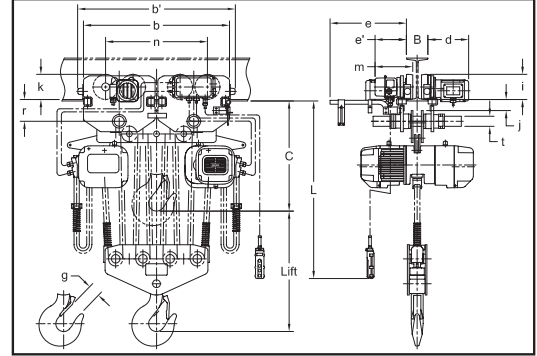
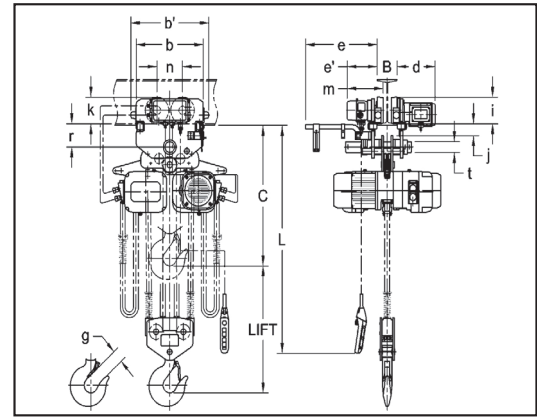


Electric Chain Hoists | 10 Ton | ERM Motorized Trolley | Single Speed

Model ERM100L-L

NER2M100S-L

ERM100L-L

NER2M100S-L


Single Speed Hoist with Single Speed Trolley - Specifications

Capacity (Tons)	Model	Style	Lifting Speed (ft/min.)	Traversing Speed (ft/min.)	Headroom (in)	Lifting Motor 3 Phase 60 Hz			Traversing Motor 3 Phase 60 Hz			Flange Range	
						Output (Hp)	Rated Current (amps)		Output (Hp)	Rated Current (amps)		Standard (in)	Optional (in)
							@208-230V	@460V		@208-230V	@460V		
10	ERM100L-L	ER1	6	40	45.7	4.7	18.3	9.2	1.0	5.1	2.5	5.50 – 8.66	8.67 – 12.00
10	NER2M100S-L	ER2	11		46.5	4.7 x 2	16.4	7.9	1.0	5.1	2.5		

Green shading reflects rental inventory.

Single Speed Hoist with Single Speed Trolley - Specifications

Capacity (Tons)	Model	Min. Radius (in)	Load Chain Dia. (mm)	Weight (lbs)	Weight for Additional One Foot of Lift (lbs)	Strands of Load Chain
10	ERM100L-L	98.4	11.2 x34.40	627	8.1	4
10	NER2M100S-L	98.4	11.2 x 31.20	880	7.4	4

Single Speed Hoist with Single Speed Trolley - Dimensions (inches)

Capacity (Tons)	Model	Style	b (in)	b1 (in)	B		C (in)	d (in)	e (in)	e1 (in)	g (in)	i (in)	j (in)	k (in)	L (ft)	m (in)	n (in)	r (in)	t (in)
					Standard (in)	Optional (in)													
10	ERM100L-L	ER1	19.7	22.9	5.50 – 8.66	8.67 – 12.00	45.7	11.2	20.9	8.8	2.4	6.89	3.1	6.9	—	10.6	7.5	6.0	2.76
10	NER2M100S-L	ER2	19.7	22.9			46.5	11.2	20.9	8.8	3.2	6.89	3.1	6.9	10.8	10.5	7.5	6.0	2.76

Green shading reflects rental inventory.