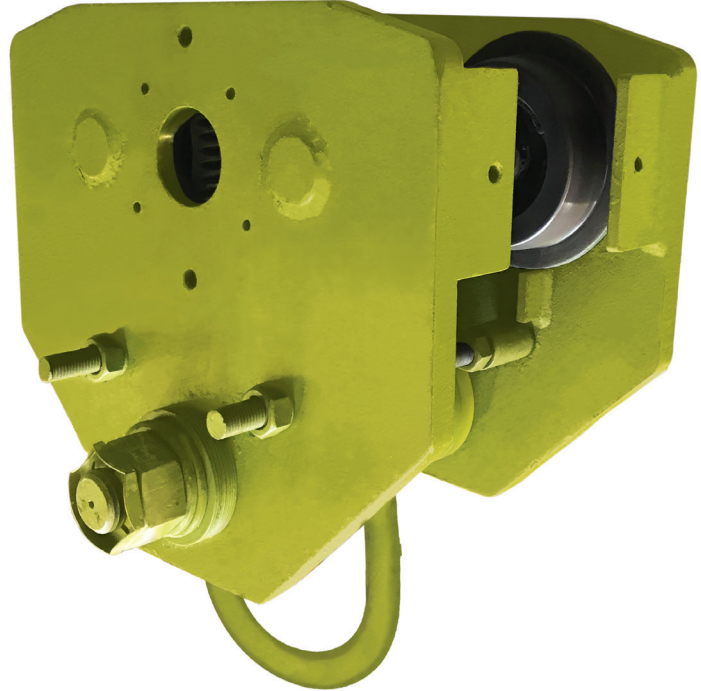
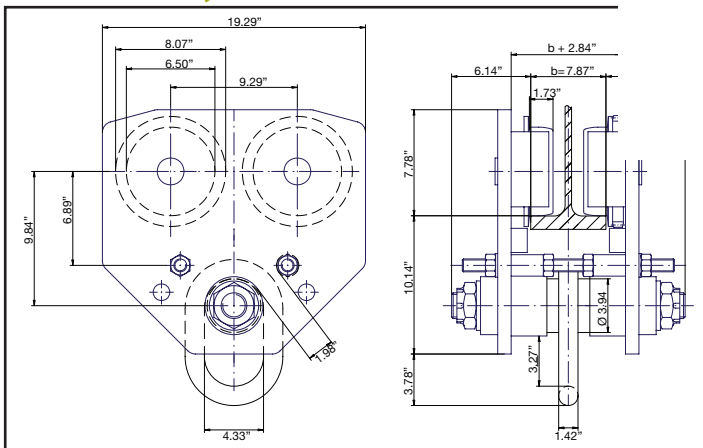
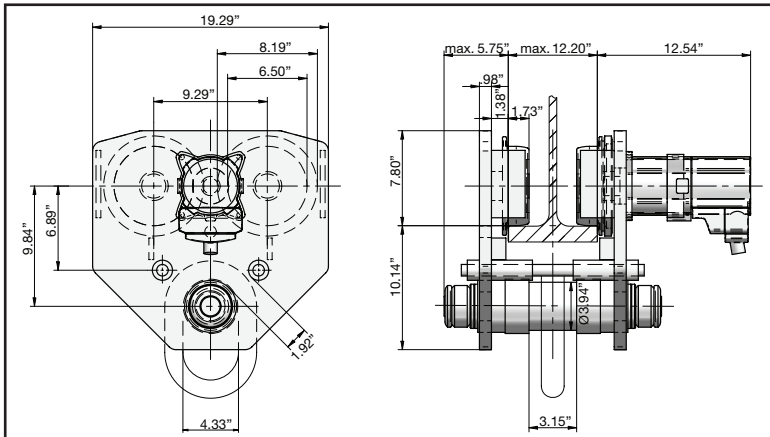


Beam Trolleys | 10–16 Ton | JDN Model | Push/Motorized Trolley

10 – 16 Ton Model

10-16T Push Trolley

10-16T Motorized Trolley

10-16T Trolley Pins

Model	Bottom Flange Width Range (in)	Tip-to-Tip Pin Length (in)	Shoulder-to-Shoulder Dimension (in)
Pin I	5.03 – 7.51	17 3/4	7.80
Pin II	7.55 – 9.80	20 1/4	10.32
Pin III	9.84 – 12.20	22 1/2	12.60
Pin IV	12.87 – 16.61	26 7/8	—

10-16T

Trolley Type	Weight (lbs)
Push	264
Motor	418.9

Green shading reflects rental inventory.