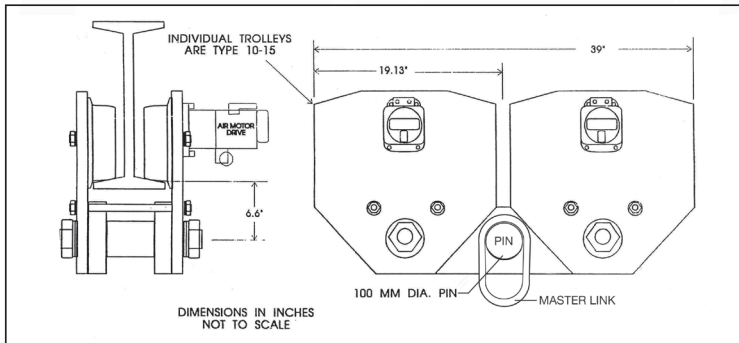


## Beam Trolleys | 25 - 50 Ton | JDN Model | Push/Motorized Trolley

### 50 Ton Model



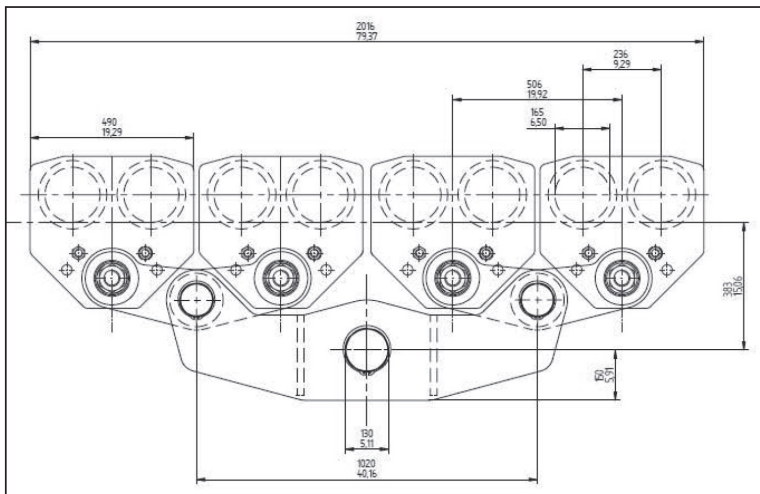
### 25 and 32 Ton



### Note:

1. If master ring is used around load pins, this will increase the headroom dimension.
2. Trolley can be used as either push or air powered, depending on trolley arrangement.

### 50 Ton



Specifications					
Capacity (Tons)	Flange Size (in)	Weight (lbs.)		Air Consumption (cfm)	Traveling Speed (fpm)
		Push	Air		
JDN25t	4.92 – 7.40 7.48 – 9.68 9.76 – 12.2 12.87 – 16.61*	720	755	28.35	39
JDN32t	6.7 – 7.40 7.48 – 9.68 9.76 – 12.2 12.87 – 16.61*	720	755	28.35	39
JDN50t	4.92 – 7.40 7.48 – 9.68 9.76 – 12.2 12.87 – 16.61*	2,500	2,550	28.35	39

*Green shading reflects rental inventory.*