

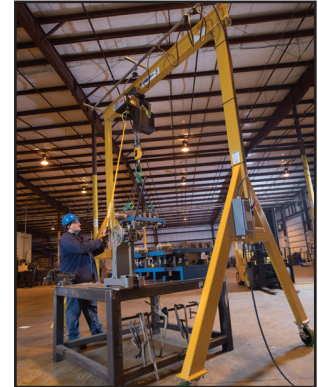


THE LIFTING EXPERTS

(800) 878-7305 www.RentLGH.com Rentals@RentLGH.com

Steel Gantries | 5 – 10 Ton | A-Series | Adjustable

5 – 10 Ton A-Series Specifications														
Capacity (Tons)	B1 Overall Span (ft)	B2 Span Between Wheel Centers	C Clear Span	D1 Height Under Beam		D2 Overall Height		E1 Beam Size (in)	E2 Beam Flange Width (in)	F Tread Width	G Wheel Dia. (in)	Weight (Lbs.)	Model	
				Min.	Max.	Min.	Max.							
5	10	9' 1"	8' 6"	9' 4"	12' 10"	10' 2"	13' 8"	S10 X 25.4#	4 7/8	6' 6"	8	1040	5A1012	
		9' 1"	8' 6"	12' 4"	15' 10"	13' 2"	16' 8"	S10 X 25.4#	4 7/8	6' 6"	8	1124	5A1015	
	15	14' 1"	13' 6"	9' 4"	12' 10"	10' 7"	14' 1"	S15 X 42.9#	5 1/2	6' 6"	8	1430	5A1512	
		14' 1"	13' 6"	12' 4"	15' 10"	13' 7"	17' 1"	S15 X 42.9#	5 1/2	6' 6"	8	1514	5A1515	
	20	19' 1"	18' 6"	9' 4"	12' 10"	11' 5"	14' 11"	S18 X 54.7#	6	6' 6"	8	2466	5A2012-W	
		19' 1"	18' 6"	12' 4"	15' 10"	14' 5"	17' 11"	S18 X 54.7#	6	6' 6"	8	2550	5A2015-W	
	25	24' 1"	23' 6"	9' 4"	12' 10"	11' 5"	14' 11"	S18 X 54.7#*	6	6' 6"	8	2886	5A2512-W	
		24' 1"	23' 6"	12' 4"	15' 10"	14' 5"	17' 11"	S18 X 54.7#*	6	6' 6"	8	2970	5A2515-W	
	30	29' 1"	28' 6"	9' 4"	12' 10"	11' 5"	14' 11"	S18 X 54.7#*	6	6' 6"	8	3306	5A3012-W	
		29' 1"	28' 6"	12' 4"	15' 10"	14' 5"	17' 11"	S18 X 54.7#*	6	6' 6"	8	3390	5A3015-W	
	35	34' 1"	33' 6"	9' 4"	12' 10"	11' 5"	14' 11"	S18 X 54.7#*	6	6' 6"	8	4085	5A3512-W	
		34' 1"	33' 6"	12' 4"	15' 10"	14' 5"	17' 11"	S18 X 54.7#*	6	6' 6"	8	4787	5A3515-W	
	40	39' 1"	38' 6"	9' 4"	12' 10"	11' 5"	14' 11"	S24 X 80#*	7	6' 6"	8	5200	5A4012-W	
		39' 1"	38' 6"	12' 4"	15' 10"	14' 5"	17' 11"	S24 X 80#*	7	6' 6"	8	5302	5A4015-W	
	7 1/2	10	9' 1"	8' 6"	9' 0"	13' 0"	10' 0"	14' 0"	S12 X 31.8#	5	6' 6"	12	1398	7A1013
			9' 1"	8' 6"	12' 0"	16' 0"	13' 0"	17' 0"	S12 X 31.8#	5	6' 6"	12	1500	7A1016
15		14' 1"	13' 6"	9' 0"	13' 0"	10' 6"	14' 6"	S18 X 54.7#	6	6' 6"	12	1900	7A1513	
		14' 1"	13' 6"	12' 0"	16' 0"	13' 6"	17' 6"	S18 X 54.7#	6	6' 6"	12	2002	7A1516	
20		19' 1"	18' 6"	9' 0"	13' 0"	10' 7"	14' 7"	S18 X 54.7#*	6	6' 6"	12	2373	7A2013	
		19' 1"	18' 6"	12' 0"	16' 0"	13' 7"	17' 7"	S18 X 54.7#*	6	6' 6"	12	2475	7A2016	
25		24' 1"	23' 6"	9' 0"	13' 0"	10' 7"	14' 7"	S18 X 54.7#*	6	6' 6"	12	2480	7A2513	
		24' 1"	23' 6"	12' 0"	16' 0"	13' 7"	17' 7"	S18 X 54.7#*	6	6' 6"	12	2582	7A2516	
30		29' 1"	28' 6"	9' 0"	13' 0"	11' 1"	15' 1"	S24 X 80#*	7	6' 6"	12	3519	7A3013	
		29' 1"	28' 6"	12' 0"	16' 0"	14' 1"	18' 1"	S24 X 80#*	7	6' 6"	12	3621	7A3016	
35		34' 1"	33' 6"	9' 0"	13' 0"	11' 1"	15' 1"	S24 X 80#*	7	6' 6"	12	4415	7A3513	
		34' 1"	33' 6"	12' 0"	16' 0"	14' 1"	18' 1"	S24 X 80#*	7	6' 6"	12	4517	7A3516	
40		39' 1"	38' 6"	9' 0"	13' 0"	11' 1"	15' 1"	S24 X 80#*	7	6' 6"	12	4892	7A4013	
		39' 1"	38' 6"	12' 0"	16' 0"	14' 1"	18' 1"	S24 X 80#*	7	6' 6"	12	4994	7A4016	
10		10	9' 1"	8' 6"	8' 11"	12' 11"	10' 5"	14' 5"	S18 X 54.7#	6	6' 6"	12	1921	10A1013
			9' 1"	8' 6"	11' 11"	15' 11"	13' 5"	17' 5"	S18 X 54.7#	6	6' 6"	12	2057	10A1016
	15	14' 1"	13' 6"	8' 11"	12' 11"	10' 5"	14' 5"	S18 X 54.7#	6	6' 6"	12	2194	10A1513	
		14' 1"	13' 6"	11' 11"	15' 11"	13' 5"	17' 5"	S18 X 54.7#	6	6' 6"	12	2330	10A1516	
	20	19' 1"	18' 6"	8' 11"	12' 11"	10' 11"	14' 11"	S24 X 80#	7	6' 6"	12	2964	10A2013	
		19' 1"	18' 6"	11' 11"	15' 11"	13' 11"	17' 11"	S24 X 80#	7	6' 6"	12	3110	10A2016	
	25	24' 1"	23' 6"	8' 11"	12' 11"	11' 0"	15' 0"	S24 X 80#*	7	6' 6"	12	3634	10A2513	
		24' 1"	23' 6"	11' 11"	15' 11"	14' 0"	18' 0"	S24 X 80#*	7	6' 6"	12	3770	10A2516	
	30	29' 1"	28' 6"	8' 11"	12' 11"	11' 0"	15' 0"	S24 X 80#*	7	6' 6"	12	4395	10A3013	
		29' 1"	28' 6"	11' 11"	15' 11"	14' 0"	18' 0"	S24 X 80#*	7	6' 6"	12	4531	10A3016	
	35	34' 1"	33' 6"	8' 11"	12' 11"	11' 0"	15' 0"	S24 X 80#*	7	6' 6"	12	4899	10A3513	
		34' 1"	33' 6"	11' 11"	15' 11"	14' 0"	18' 0"	S24 X 80#*	7	6' 6"	12	5035	10A3516	
	40	39' 1"	38' 6"	8' 11"	12' 11"	11' 0"	15' 0"	S24 X 80#*	7	6' 6"	12	5402	10A4013	
		39' 1"	38' 6"	11' 11"	15' 11"	14' 0"	18' 0"	S24 X 80#*	7	6' 6"	12	5538	10A4016	



I-Beam	Flange Width (in)
S6"-12.5#	3 3/8
S8"-18.4#	4
S10"-25.4#	4 5/8
S12"-31.8#	5
S15"-42.9#	5 1/2
S18"-54.7#	6
S24"-80#	7"

Green shading reflects rental inventory.
*Capped I-Beam

