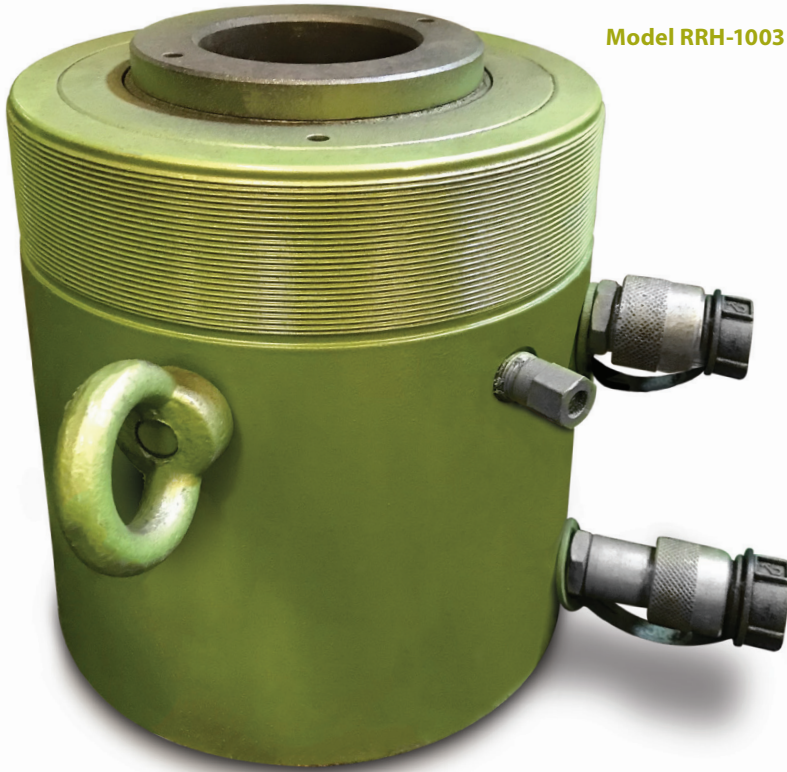
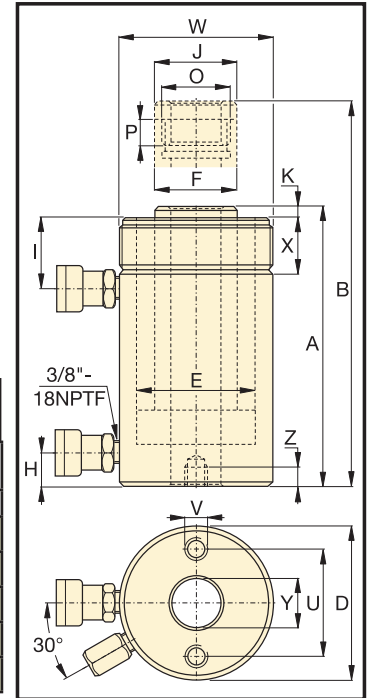


Hydraulic Cylinders | 60 – 150 Ton | RRH Series | Double Acting - Center Hole


Model RRH-1003
Double-Acting Hollow Plunger


Specifications								
Cylinder Capacity (tons)	Stroke (in.)	Model	Max Cylinder Capacity (tons)		Cylinder Effective Area (in. ²)		Oil Capacity (in. ³)	
			Advance	Retract	Advance	Retract	Advance	Retract
60	6.50	RRH-606	64	42	12.73	8.37	82.77	54.24
	10.12	RRH-6010	64	42	12.73	8.37	128.94	84.49
100	3.00	RRH-1003	103	68	20.63	13.54	61.88	40.64
	10.13	RRH-10010	103	68	20.63	13.54	208.84	137.17
150	8.00	RRH-1508	158	80	31.62	15.91	252.97	127.23

Green shading reflects rental inventory.

Dimensions															
Cylinder Capacity (tons)	A Collapsed Height (in.)	B Extended Height (in.)	D Out. Dia. (in.)	E Cylinder Bore Dia. (in.)	F Plunger Diam. (in.)	H Cyl. Base to Adv. Port (in.)	I Cyl. Top to Return Port (in.)	J Saddle Diam. (in.)	K Saddle Protrusion from Plngr. (in.)	P Plunger Thread Length (in.)	W Collar Thread (in.)	X Collar Thread Length (in.)	Y Center Hole Diam. (in.)	U	Weight (lbs.)
60	12.75	19.25	6.25	4.88	3.63	1.25	2.63	3.61	.50	.75	6 ¼ – 12	1.91	2.13		78
	17.25	27.38	6.25	4.88	3.63	1.25	2.63	3.61	.50	.75	6 ¼ – 12	1.91	2.13		101
100	10.00	13.00	8.38	6.50	5.00	1.50	3.38	4.97	.50	1.00	8 ½ – 12	2.38	3.13		135
	18.13	28.25	8.38	6.50	5.00	1.50	3.38	4.97	.50	1.00	8 ½ – 12	2.38	3.13		235
150	13.75	21.75	9.75	7.50	6.00	1.50	2.38	5.00	.19	1.00	—	—	3.13		245

Green shading reflects rental inventory.