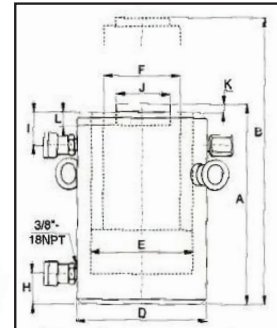
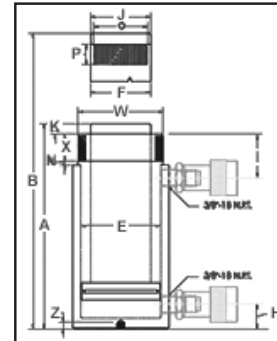


## Hydraulic Cylinders | 300 Ton | RR Series | Double Acting

**Model RR-3006**


### Specifications

Cylinder capacity (tons)	Stroke (in.)	Model	Cyl. effect Area (in.2)	Oil Capacity (in.3)	A Collap. Height (in.)	B Ext. Height (in.)	D Outside Diam (in.)	E Cyl. Bore Diam (in.)	F Plngr. Diam. (in.)	H Cyl. Base to Advance port (in.)	J Saddle Diam. (in.)	K Saddle Protrusion from plngr (in.)	O Plunger Internal Thread (in.)	P Plunger Thread Length (in.)	W Collar Thread (in.)	X Collar Thread Length (in.)	Top to Return Port (in.)	Weight (lbs.)
150	13.13	RR-15013	30.71	403.27	22.20	35.31	8.00	6.25	4.50	1.94	4.49	.75	3/8 - 16	1.38	8	2.36	3.31	275
300	6.00	RR-3006	70.93	425.56	19.13	25.13	12.25	9.50	6.50	3.50	6.50	1.13	2.5 - 12	3.25	12 1/4 - 12	2.31	4.50	441

Green shading reflects rental inventory.

### Specifications

Cylinder Capacity (tons)	Stroke (in.)	Maximum Operating Pressure (psi)	Model Number	Maximum Cylinder Capacity (tons)		Cylinder Effective Area (in.)		Oil Capacity (in.)		Weight (lbs.)	A Collapse Height (in.)	B Extend Height (in.)	D Outside Dia. (in.)	E Cylinder Bore Dia. (in.)	F Plunger Dia. (in.)	H Base to Advance Port (in.)	I Top to Retract Port (in.)	J Standard Saddle Dia. (in.)	K Saddle Protr. from Plgr. (in.)	L Depth of Plunger Hole (in.)
				Push	Pull	Push	Pull	Push	Pull											
500	4.00	10,000	CLR-5004	500	193	113.5	38.60	445.5	152	791	15.75	19.75	15.75	12.01	9.76	3.15	6.61	7.05	.20	.98