



THE LIFTING EXPERTS

(800) 878-7305

www.RentLGH.com

Rentals@RentLGH.com

## Shackles | 120 - 300 Ton | Alloy Bolt Type

**Material:** bow and pin high tensile steel, Grade 8, quenched and tempered

**Safety Factor:** MBL equals 5 x WLL

**Finish:** hot dipped galvanized

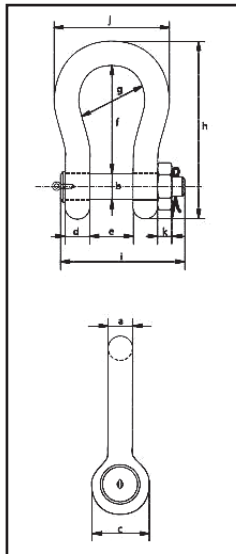
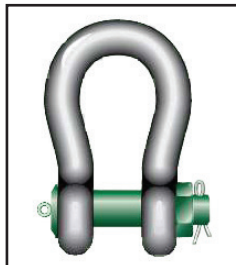
**Temperature Range:** -20°C up to +200° C

**Certificates:** at no extra charges this product can be supplied with a works

certificate, certificate of basic raw material, manufacturer test certificate, EC Declaration of Conformity and all shackles starting from 150 tons are supplied with a Lloyd's Register of Shipping Certificate on proof load

**Note:** +5% forging tolerance on inside width and length

P-6036



Specifications (mm)												
Working load limit	Diameter bow	Diameter pin	Diameter eye	Width eye	Width inside	Length inside	Width bow	Length	Length bolt	Width	Thickness nut	Weight each
tons	a mm	b mm	c mm	d mm	e mm	f mm	g mm	h mm	i mm	j mm	k mm	kg
120	95	95	208	91	147	400	238	647	440	428	50	243
150	105	108	238	102	169	410	275	688	490	485	60	353
200	120	130	279	113	179	513	290	838	520	530	60	518
250	130	140	299	118	205	554	305	904	560	565	65	628
300	140	150	325	123	205	618	305	996	575	585	70	750

Green shading reflects rental inventory.

Specifications (in)												
Working load limit	Diameter bow	Diameter pin	Diameter eye	Width eye	Width inside	Length inside	Width bow	Length	Length bolt	Width	Thickness nut	Weight each
tons	a in.	b in.	c in.	d in.	e in.	f in.	g in.	h in.	i in.	j in.	k in.	lbs.
120	3 3/4	3 3/4	8 3/16	3 19/32	5 25/32	15 3/4	9 3/8	25 15/32	17 7/16	16 27/32	1 31/32	243
150	4 1/8	4 1/4	9 3/8	4 1/32	6 21/32	16 5/32	10 13/16	27 3/32	19 9/32	19 3/32	2 3/8	353
200	4 23/32	5 1/8	10 31/32	4 7/16	7 1/16	20 3/16	11 13/32	33	20 15/32	20 7/8	2 3/8	518
250	5 1/8	5 1/2	11 25/32	4 21/32	8 1/16	21 13/16	12	35 19/32	22 1/16	22 1/4	2 9/16	628
300	5 1/2	5 29/32	12 25/32	4 27/32	8 1/16	24 11/32	12	39 7/32	22 5/8	23 1/32	2 3/4	750

Green shading reflects rental inventory.

