



# Lifting Gear Hire

Lifting Equipment Rental Specialists

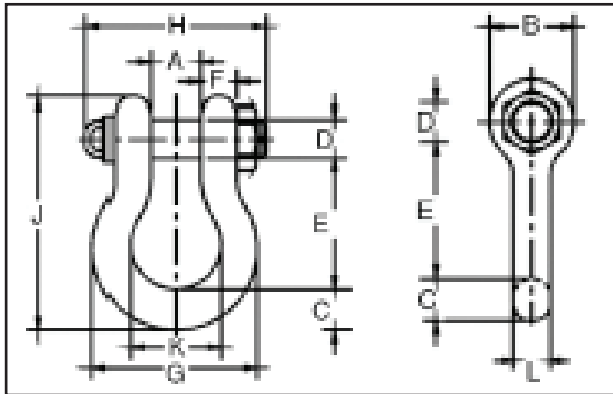
North American Rental Headquarters

T: 800.878.7305 | F: 708.430.3536 | www.RentLGH.com | Rentals@RentLGH.com

## Shackles | 30 - 400 Ton | Alloy Bolt Type

- Shackles are Quenched and Tempered and can meet DNV impact requirements of 42 joules at -20°C.
- Working Load Limit is permanently shown on every shackle.
- Alloy bows, Alloy bolts.
- Quenched and Tempered.
- All sizes are individually proof tested to 2.0 times the Working Load Limit.
- Shackles 200 metric tons and larger are provided as follows.
- Non Destructive Tested.
- Serialized Pin and Bow.
- Material Certification (chemical).
- Certification must be requested at time of order.
- Forged Alloy Steel 30 thru 175 metric tons. Cast Alloy Steel 200 thru 400 metric tons.
- Pins are galvanized and painted red.

### G-2140 S-2140



### Specifications

| Nominal Shackle Size (in.) | Working Load Limit* (t) | Model        |             | 2130 Weight Each (lbs.) |
|----------------------------|-------------------------|--------------|-------------|-------------------------|
|                            |                         | G-2140 Galv. | S-2140 S.C. |                         |
| 1 3/4                      | 40                      | 1021138      | 1021147     | 33.9                    |
| 2                          | 55                      | 1021156      | 1021165     | 52.0                    |
| 2 1/2                      | 85                      | 1021174      | 1021183     | 96.0                    |
| 3                          | 120                     | 1021192      | —           | 178.0                   |
| 3 1/2                      | † 150                   | 1021218      | —           | 265.0                   |
| 4                          | † 175                   | 1021236      | —           | 338.0                   |
| 4 3/4**                    | † 200                   | 1021414      | —           | 450.0                   |
| 5**                        | † 250                   | 1021432      | —           | 600.0                   |
| 6**                        | † 300                   | 1021450      | —           | 775.0                   |

Green shading reflects rental inventory.

### Dimensions

| Nominal Shackle Size (in.) | Working Load Limit* (t) | Dimensions (in.) |       |      |      |       |      |       |       |       |       |      | Tolerance + / - |     |
|----------------------------|-------------------------|------------------|-------|------|------|-------|------|-------|-------|-------|-------|------|-----------------|-----|
|                            |                         | A                | B     | C    | D    | E     | F    | G     | H     | J     | K     | L    | A               | E   |
| 1 3/4                      | 40                      | 2.88             | 4.19  | 2.25 | 2.00 | 7.00  | 1.75 | 8.86  | 9.06  | 12.34 | 5.00  | 1.84 | .13             | .25 |
| 2                          | 55                      | 3.25             | 4.81  | 2.40 | 2.25 | 7.75  | 2.00 | 9.97  | 10.41 | 13.68 | 5.75  | 2.08 | .13             | .25 |
| 2 1/2                      | 85                      | 4.12             | 5.69  | 3.12 | 2.75 | 10.50 | 2.62 | 12.87 | 13.56 | 17.84 | 7.25  | 2.71 | .25             | .25 |
| 3                          | 120                     | 5.00             | 6.50  | 3.62 | 3.25 | 13.00 | 3.00 | 14.36 | 16.50 | 21.50 | 7.88  | 3.11 | .25             | .25 |
| 3 1/2                      | † 150                   | 5.25             | 8.00  | 4.12 | 3.75 | 14.63 | 3.75 | 16.50 | 19.00 | 24.62 | 9.00  | 3.62 | .25             | .25 |
| 4                          | † 175                   | 5.50             | 9.00  | 4.56 | 4.25 | 14.50 | 4.00 | 18.42 | 19.75 | 25.69 | 10.00 | 4.10 | .25             | .25 |
| 4 3/4**                    | † 200                   | 7.25             | 10.50 | 6.00 | 4.75 | 15.62 | 3.75 | 21.00 | 20.50 | 29.25 | 11.00 | 4.50 | .25             | .25 |
| 5**                        | † 250                   | 8.50             | 12.00 | 6.50 | 5.00 | 20.00 | 3.88 | 24.50 | 21.97 | 35.00 | 13.00 | 4.50 | .25             | .25 |
| 6**                        | † 300                   | 8.38             | 12.00 | 6.75 | 6.00 | 19.50 | 4.75 | 25.00 | 24.35 | 35.25 | 13.00 | 5.00 | .25             | .25 |

\*Note: Maximum Proof Load is 2.0 times the working load limit. Minimum ultimate load is 4 times the working load limit on 200 thru 400 metric tons.

For sizes 30 thru 175 metric tons, minimum ultimate load is 5.4 times the working load limit.

\*\*Cast Alloy steel.

+ Furnished with round head bolts with welded handle.

Green shading reflects rental inventory.