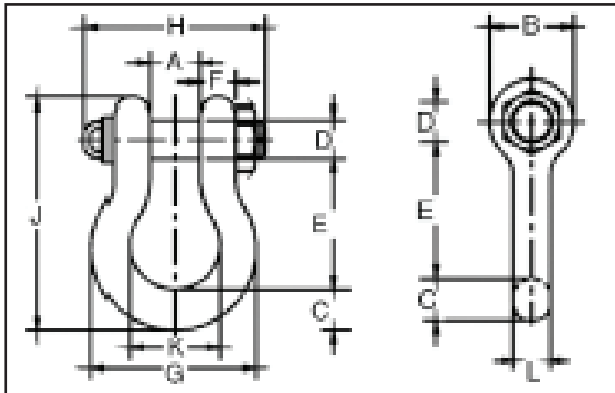


Shackles | 30 - 300 Ton | Alloy Bolt Type

- Shackles are Quenched and Tempered and can meet DNV impact requirements of 42 joules at -20°C.
- Working Load Limit is permanently shown on every shackle.
- Alloy bows, Alloy bolts.
- Quenched and Tempered.
- All sizes are individually proof tested to 2.0 times the Working Load Limit.
- Shackles 200 metric tons and larger are provided as follows.
- Non Destructive Tested.
- Serialized Pin and Bow.
- Material Certification (chemical).
- Certification must be requested at time of order.
- Forged Alloy Steel 30 thru 175 metric tons. Cast Alloy Steel 200 thru 400 metric tons.
- Pins are galvanized and painted red.

G-2140 S-2140



Specifications				
Nominal Shackle Size (in.)	Working Load Limit* (t)	Model		2130 Weight Each (lbs.)
		G-2140 Galv.	S-2140 S.C.	
1 1/2	30	1021110	1021129	20.8
1 3/4	40	1021138	1021147	33.9
2	55	1021156	1021165	52.0
2 1/2	85	1021174	1021183	96.0
3	120	1021192	—	178.0
3 1/2	† 150	1021218	—	265.0
4	† 175	1021236	—	338.0
4 3/4**	† 200	1021414	—	450.0
5**	† 250	1021432	—	600.0
6**	† 300	1021450	—	775.0

Green shading reflects rental inventory.

Dimensions

Nominal Shackle Size (in.)	Working Load Limit* (t)	Dimensions (in.)											Tolerance + / -	
		A	B	C	D	E	F	G	H	J	K	L	A	E
1 1/2	30	2.38	3.62	1.62	1.63	5.75	1.39	6.88	7.75	10.00	3.88	1.54	.13	.25
1 3/4	40	2.88	4.19	2.25	2.00	7.00	1.75	8.86	9.06	12.34	5.00	1.84	.13	.25
2	55	3.25	4.81	2.40	2.25	7.75	2.00	9.97	10.41	13.68	5.75	2.08	.13	.25
2 1/2	85	4.12	5.69	3.12	2.75	10.50	2.62	12.87	13.56	17.84	7.25	2.71	.25	.25
3	120	5.00	6.50	3.62	3.25	13.00	3.00	14.36	16.50	21.50	7.88	3.11	.25	.25
3 1/2	† 150	5.25	8.00	4.12	3.75	14.63	3.75	16.50	19.00	24.62	9.00	3.62	.25	.25
4	† 175	5.50	9.00	4.56	4.25	14.50	4.00	18.42	19.75	25.69	10.00	4.10	.25	.25
4 3/4**	† 200	7.25	10.50	6.00	4.75	15.62	3.75	21.00	20.50	29.25	11.00	4.50	.25	.25
5**	† 250	8.50	12.00	6.50	5.00	20.00	3.88	24.50	21.97	35.00	13.00	4.50	.25	.25
6**	† 300	8.38	12.00	6.75	6.00	19.50	4.75	25.00	24.35	35.25	13.00	5.00	.25	.25

*Note: Maximum Proof Load is 2.0 times the working load limit. Minimum ultimate load is 4 times the working load limit on 200 thru 400 metric tons. For sizes 30 thru 175 metric tons, minimum ultimate load is 5.4 times the working load limit.

**Cast Alloy steel.

+ Furnished with round head bolts with welded handle.

Green shading reflects rental inventory.

Shackles | 3.3 – 175 Ton | Alloy Bolt Type

Material: bow and pin alloy steel, grade 8, quenched and tempered

Finish: hot dipped galvanized (175 ton shackle is painted)

Safety Factor: MBL equals 5 x WLL

Temperature Range: -20°C up to +200°C

Standard: ASME B30.26 and meets performance requirements of US Fed. Spec. RR-C-271

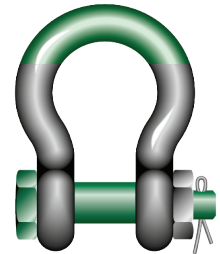
Certification: 21, 22, 31, MTC^a, MTC^b, LROS, CE, ABS PDA, ABS MA

Type IVA Class 3, grade B

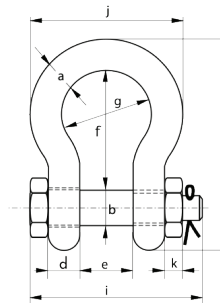
Specifications (mm)												
Working load limit	Diameter bow	Diameter pin	Diameter eye	Width eye	Width inside	Length inside	Width bow	Length	Length bolt	Width	Thickness nut	Weight each
tons	a (mm)	b (mm)	c (mm)	d (mm)	e (mm)	f (mm)	g (mm)	h (mm)	i (mm)	j (mm)	k (mm)	(kg)
18	32	35	72	32	51	115	83	201	178	147	30	4.95
21	35	38	80	35	57	133	92	227	197	162	33	6.62
30	38	42	88	38	60	146	99	249	217	175	34	8.11
40	45	50	103	45	74	178	126	300	260	216	40	15
55	57	57	117	57	83	197	138	341	303	252	46	23
85	70	70	143	70	105	260	180	437	363	320	56	44

* For shackles ≥ WLL 150t
** With round headed bolt

** Excluded from ABS Type Approval
Green shading reflects rental inventory.



G-5263



Specifications (mm)												
Working load limit	Diameter bow	Diameter pin	Diameter eye	Width eye	Width inside	Length inside	Width bow	Length	Length bolt	Width	Thickness nut	Weight each
tons	a (in)	b (in)	c (in)	d (in)	e (in)	f (in)	g (in)	h (in)	i (in)	j (in)	k (in)	(lbs)
18	1 1/4	1 3/8	2 37/32	1 1/4	2	4 17/32	3 3/32	7 29/32	7	5 25/32	1 3/16	10.91
21	1 3/8	1 1/2	3 5/32	1 3/8	2 1/4	5 1/4	3 5/8	8 15/16	7 3/4	6 3/8	1 5/16	14.59
30	1 1/2	1 5/8	3 15/32	1 1/2	2 3/8	5 3/4	3 29/32	9 13/16	8 17/32	6 7/8	1 5/16	17.88
40	1 3/4	2	4 1/16	1 25/32	2 29/32	7	4 31/32	11 13/16	10 1/4	8 1/2	1 9/16	33.07
55	2	2 1/4	4 19/32	2 1/4	3 9/32	7 3/4	5 1/16	13 7/16	11 15/16	9 29/32	1 25/32	50.71
85	2 1/2	2 3/4	5 5/8	2 3/4	4 1/8	10 1/4	7 3/32	17 1/32	14 9/32	12 19/32	2 7/32	97

* For shackles ≥ WLL 150t
** With round headed bolt

** Excluded from ABS Type Approval
Green shading reflects rental inventory.

